

## RTC-10Hz-375

RTC Geophones are compatible with all field data acquisition systems.

Their excellent characteristics are compatible with larger, heavier, and more expensive units. High Quality, Low Cost Geophones for your Geophysical, Industrial, and Military Uses.

Designed to yield the performance needed for scientific studies, yet has the ruggedness required

for petroleum exploration work. 100% compatible with other manufactures 10hz, 375 ohm geophones.



### 10Hz Elements Main Specifications (at 20°C)

Parameters \ Mode	RTC-10Hz-375
<b>Frequency</b>	
Natural Frequency (fn)	10 Hz
Tolerance	±2.5%
Max Tilt Angle For Specified fn	10°
Typical spurious frequency	>240 Hz
<b>Distortion</b>	
Distortion with 0.7 in/s p.p coil to case velocity	<0.1%
Distortion measurement frequency	12 Hz
Max tilt angle for distortion specification	10°
<b>Damping</b>	
Typical open circuit damping	0.25
Damping with 1000 Ohm shunt resistor	0.686
Tolerance	+5%, -0%
<b>Coil Resistance</b>	
Standard	375 ohm
Tolerance	±2.5%
<b>Sensitivity</b>	
Open Circuit Intrinsic Voltage Sensitivity	28.8 V/m/s
Sensitivity with 1000 Ohm shunt resistor	20.9 V/m/s
Tolerance	±2.5%
<b>Physical</b>	
Moving Mass	11 g
Maximum coil excursion p.p	2 mm
Diameter	25.4 mm
Height	32 mm
Weight	85 g
Operating temperature range	-40°C ~ +100°C
Warranty Period	3 years

**R.T. Clark**

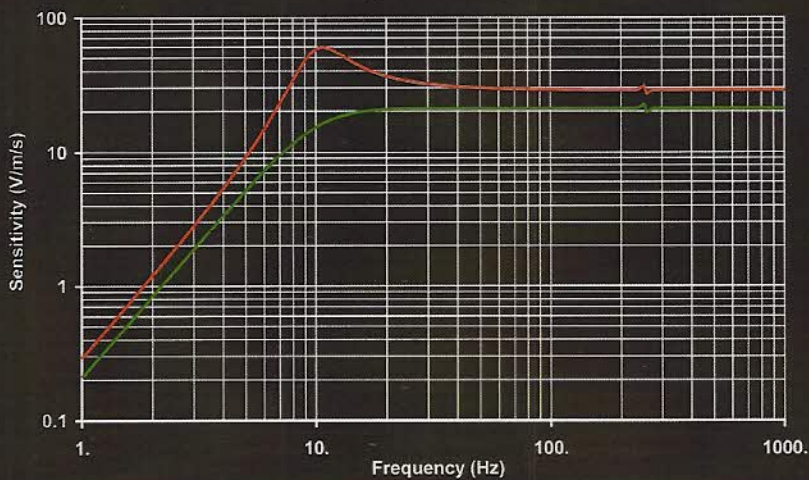
P.O. Box 20957 Oklahoma City, OK USA 73156  
Tele: +1 -405-751-9696 Fax: +1 -405-751-6711  
web:www.rtclark.com Email: rtclark@rtclark.com

© RTC 11/12

# RTC-10Hz-375

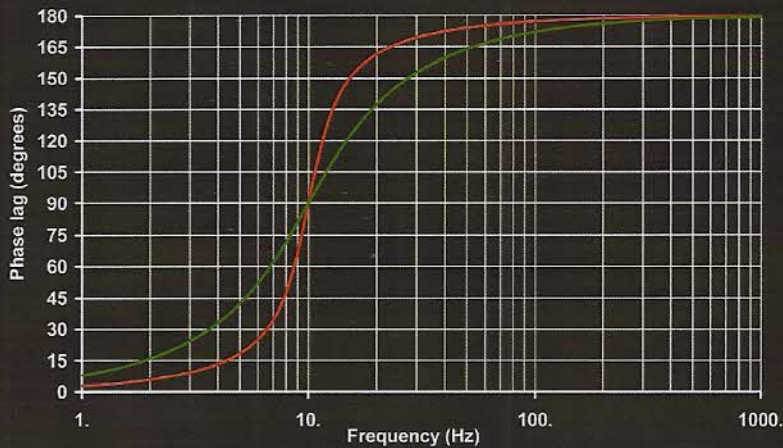
## Geophone Response Curve

Geo Type : RTC-10Hz-375		Shunt (ohm)	R <sub>total</sub> (ohm)	Damping	Sensitivity V/m/s
Frequency :	10. Hz	Curve 1	O.C.	0.250	28.80
Moving Mass :	11. g	Curve 2	1,000	0.686	20.95
Nr of geophones in series:	1.				
Nr of parallel branches:	1.				



## Geophone Phase Lag (signal relative to case velocity)

Geo Type : RTC-10Hz-375		Shunt (ohm)	R <sub>total</sub> (ohm)	Damping	Sensitivity V/m/s
Frequency :	10. Hz	Curve 1	O.C.	0.250	28.80
Moving Mass :	11. g	Curve 2	1,000	0.686	20.95
Nr of geophones in series:	1.				
Nr of parallel branches:	1.				



**R.T. Clark**

P.O. Box 20957 Oklahoma City, OK USA 73156  
 Tele: +1 -405- 751-9696 Fax: +1 -405- 751-6711  
 web:www.rtcclark.com Email: rtcclark@rtcclark.com  
 © RTC 11/12